

1MultiSensorMesswandler-2L-Pt100

Outdoor transducer active 4...20mA for temperature

The 1MultiSensorMesswandler-2L-Pt100 is an active outdoor transducer with a 2-wire Pt100 temperature sensor. The transducer is used to measure temperature outdoors and converts it into a 4...20mA standard signal.

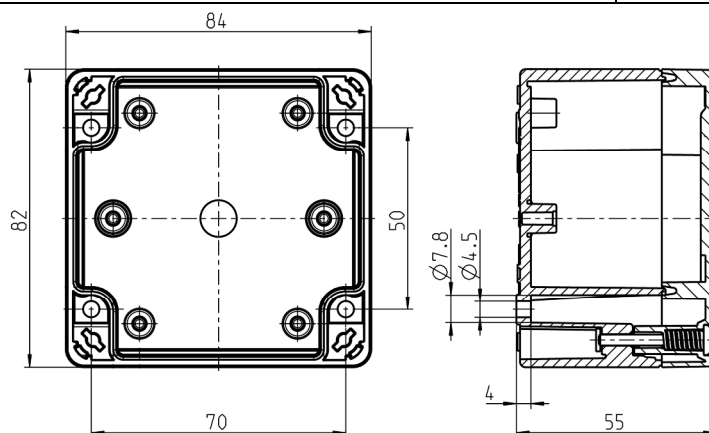


Key commercial data

Packing unit	1 pc
Weight per piece (excluding packing)	180g
Weight per piece (including packing)	200g
Country of origin	Germany

Technical data mechanically

Width (W)	84mm
Height (H)	145mm
Depth (D)	55mm
Ambient temperature (operation)	-35°C ... 60°C
Ambient temperature (storage/transport)	-35°C ... 70°C
Relative humidity	95% without condensation
Mounting position	any
Housing, plastic, with quick-release screws	Spelsberg TG PC 88-6-o
Venting element installed	yes
Cable gland made of plastic	M12×1,5
Cable gland clamping area	Ø3,5mm ... Ø7mm





1MultiSensorMesswandler-2L-Pt100
Outdoor transducer active 4...20mA for temperature

Technical data electric

Nominal voltage U_N	15V ... 36V DC stabilized $\pm 0,2V$
Nominal current I_N	max 50mA
Nominal power P_N	max 1,8W
Measuring range AQ	-50°C ... 75°C
Standard signal AQ	4...20mA
Resolution AQ	12 bit $\pm 0,03^\circ C$
Connection type AQ	3-wire connection
Load R_{AQ} 0/4...20mA	$\leq 470\Omega$
Sensor type	Pt100 1/3 DIN 2-wire
Deviation	typ. $\pm 0,2K$
Protection class	IP65
Connection data PCB terminal	
Connection type	Push-in spring connection
Conductor cross section solid	0,25mm ² ... 1,5mm ²
Conductor cross section flexible	0,25mm ² ... 1,5mm ²
Conductor cross section with ferrule, without plastic sleeve	0,25mm ² ... 1,5mm ²
Conductor cross section with ferrule, with plastic sleeve	0,25mm ² ... 0,75mm ²
Stripping length	8mm

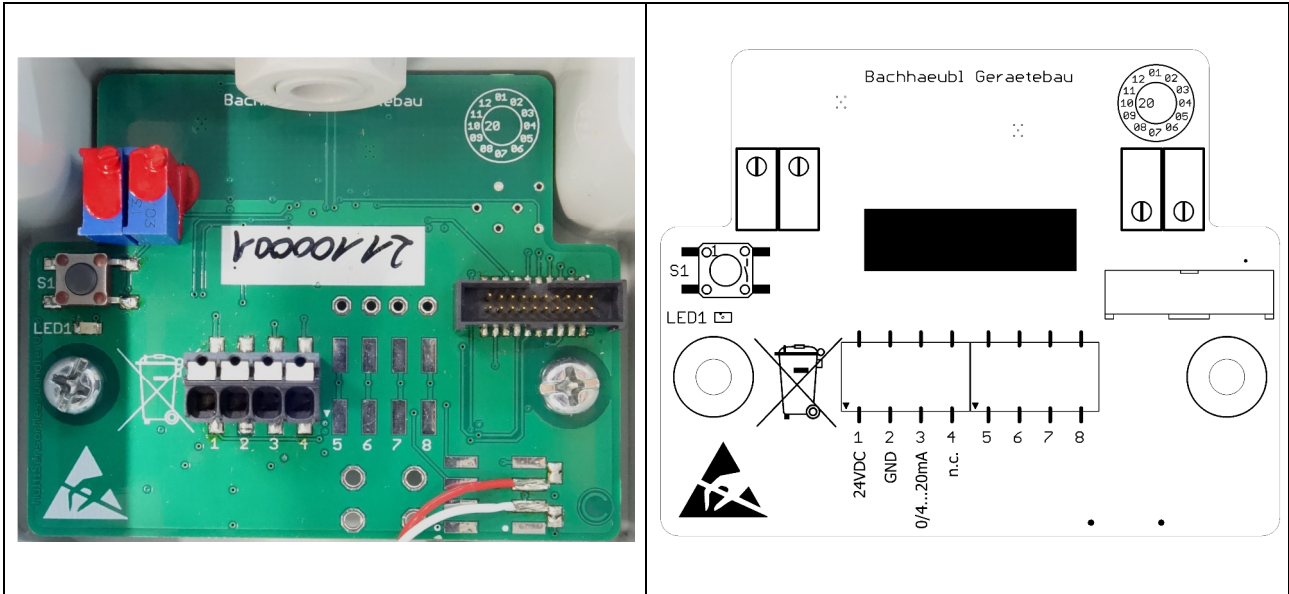
Standards and Regulations

Standards/regulations	DIN EN IEC 61326-1: 2022-11
	DIN EN IEC 61326-2-3: 2022-11







1MultiSensorMesswandler-2L-Pt100

Outdoor transducer active 4...20mA for temperature

PIN assignment



Functionality of the device

Power supply	LED1 green	Analogue output AQ 4...20mA	Function
$\geq 15V$	 alternating	AQ 4...20mA Load $R_{AQ} \leq 470\Omega$	Normal
$\geq 15V$		AQ 0mA Load $R_{AQ} \leq 470\Omega$	Error
Error condition	LED1 green	Analogue output AQ 4...20mA	Function
The measured temperature value is not within the measuring range or the temperature sensor is defective.	 100ms	AQ 0mA Load $R_{AQ} \leq 470\Omega$	Error
There is an error in the device.	 500ms	AQ 0mA Load $R_{AQ} \leq 470\Omega$	Error
There is an error in the device that can't be evaluated.	 alternating	AQ 0mA Load $R_{AQ} \leq 470\Omega$	Error
Wire break or the load on the current loop is too high.	 alternating	AQ 0mA Load $R_{AQ} > 470\Omega$	Normal

1MultiSensorMesswandler-2L-Pt100

Outdoor transducer active 4...20mA for temperature

<p>Function Normal: The function of the device lies in its specified parameters.</p> <p>Function Error: The device is defective and should be replaced.</p>	<ul style="list-style-type: none"> LED does not light LED lights up green for 100ms LED does not light for 10s LED flashes
	<p>If the device has an error, a reset by pressing the button S1 may help. If the device error persists after a reset and turning off the power, the device should be replaced.</p>

Safety regulations and installation notes

	<p>Before startup please ensure:</p> <ul style="list-style-type: none"> Only skilled persons may install, start up and operate the device. Observe the national safety and accident prevention regulations.
	<p>WARNING: Danger to life by electric shock!</p> <ul style="list-style-type: none"> Never carry out work when voltage is present. Establish mains connection correctly and ensure protection against electric shock. The device must be switched off outside the power supply in accordance with the regulations of EN 60950-1 (e.g. by means of line protection on the primary side). Cover termination area after installation in order to avoid accidental contact with live parts (e.g. installation in control cabinet). Protect the device against foreign bodies penetrating it.
	<p>NOTE: Danger if used improperly!</p> <ul style="list-style-type: none"> Do not subject the device to any load that exceeds the described limits. Observe mechanical and thermal limits. Ensure that the wiring is the correct size and have sufficient fuse protection.
	<ul style="list-style-type: none"> It is not permissible to modify the device. Do not repair the device yourself but replace it with an equivalent device. Repairs may only be carried out by the manufacturer. The manufacturer is not liable for damage resulting from violation. The device may only be used for its intended use.
	<p>NOTE: Electrostatically sensitive components!</p> <ul style="list-style-type: none"> Contains parts and assemblies that can be damaged by electrostatic discharge ESD.

1MultiSensorMesswandler-2L-Pt100
Outdoor transducer active 4...20mA for temperature

Pictures

